

ENVIRONMENTAL PRODUCT DECLARATION

as per ISO 14025 and EN 15804

Owner of the Declaration	ARGE; European Federation of Associations of Lock and Builders Hardware Manufacturers
Programme holder	Institut Bauen und Umwelt e.V. (IBU)
Publisher	Institut Bauen und Umwelt e.V. (IBU)
Declaration number	EPD-ARG-20160188-IBG1-EN
ECO EPD Ref. No.	ECO-00000472
Issue date	16.12.2016
Valid to	15.12.2022

Electromechanical hardware
**ARGE; European Federation of Associations of
Lock and Builders Hardware Manufacturers**

(This EPD is valid only for products supplied by an ARGE EPD licence holder)

www.bau-umwelt.com / <https://epd-online.com>





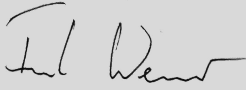
MAUER
ASSA ABLOY

Mauer Nederland B.V. is als licentienemer van de
Algemene branchevereniging VHS gerechtigd
deze EPD te verstrekken

Algemene Branchevereniging
VHS



1. General Information

<p>ARGE</p> <hr/> <p>Programme holder IBU - Institut Bauen und Umwelt e.V. Panoramastr. 1 10178 Berlin Germany</p> <hr/> <p>Declaration number EPD-ARG-20160188-IBG1-EN</p> <hr/> <p>This Declaration is based on the Product Category Rules: Building Hardware products, 07.2014 (PCR tested and approved by the SVR)</p> <hr/> <p>Issue date 16/12/2016</p> <hr/> <p>Valid to 15/12/2022</p> <hr/> <p></p> <hr/> <p>Prof. Dr.-Ing. Horst J. Bossenmayer (President of Institut Bauen und Umwelt e.V.)</p> <hr/> <p></p> <hr/> <p>Dr. Burkhard Lehmann (Managing Director IBU)</p>	<p>Electromechanical hardware</p> <hr/> <p>Owner of the Declaration ARGE; European Federation of Associations of Lock and Builders Hardware Manufacturers Offerstraße 12, 42551 Velbert Germany</p> <hr/> <p>Declared product / Declared unit 1 kg of electromechanical hardware</p> <hr/> <p>Scope: This Association EPD covers electromechanical hardware security devices used to close openings door by means of electrical impulses. The reference product used to calculate the impacts for this group of products is an electromechanical hardware such as a lock, handle or push button device. It is composed of steel, stainless steel and electrical components. This product assessed for this EPD has got 2 different configurations (grid-connected and battery-powered) and serves as reference to cover all products within this family. This product has been determined in accordance with ARGE and the market share as the most representative product of the family. The owner of the declaration shall be liable for the underlying information and evidence; the IBU shall not be liable with respect to manufacturer information, life cycle assessment data and evidences.</p> <hr/> <p>Verification</p> <table border="1"> <tr> <td colspan="2">The CEN Norm /EN 15804/ serves as the core PCR</td> </tr> <tr> <td colspan="2">Independent verification of the declaration according to /ISO 14025/</td> </tr> <tr> <td><input type="checkbox"/> internally</td> <td><input checked="" type="checkbox"/> externally</td> </tr> </table> <hr/> <p></p> <hr/> <p>Dr. Frank Werner (Independent verifier appointed by SVR)</p>	The CEN Norm /EN 15804/ serves as the core PCR		Independent verification of the declaration according to /ISO 14025/		<input type="checkbox"/> internally	<input checked="" type="checkbox"/> externally
The CEN Norm /EN 15804/ serves as the core PCR							
Independent verification of the declaration according to /ISO 14025/							
<input type="checkbox"/> internally	<input checked="" type="checkbox"/> externally						

2. Product

2.1 Product description

This Association Environmental Product Declaration covers electromechanical hardware, security devices designed to secure doors in the closed position and integrate into electronic control systems such as alarms, surveillance, remote access, fingerprint scanners etc.

There are 2 types of configurations:

- battery-powered
- grid-connected.

2.2 Application

These products are designed to be integrated into door assemblies of various materials and applications. They may be used for either interior or exterior doors, following the instructions of the manufacturer.

2.3 Technical Data

No technical data can be defined as no EN or national standards are available.

2.4 Placing on the market / Application rules

For the placing on the market in the EU/EFTA (with the exception of Switzerland) the Regulation (EU) No 305/2011 "Construction products regulation" has to be regarded.

In case that the products need to get CE-marked, a "declaration of performance" in accordance with this regulation is compulsory.

For the application and use, respective additional national provisions may apply.

2.5 Delivery status

The products are sold by unit. Deliveries of a single unit might be possible but will be an exception. Regular deliveries will cover a larger amount of devices as they are put on the market as "b to b" product and not for a final customer.

2.6 Base materials / Ancillary materials

The base materials of the product studied for this EPD is shown in the following table:

Name	Value	Unit
Steel	71.93	%
Stainless steel	20.8	%
Zamak	3.63	%
Motor	1.37	%
PCB	1.08	%
ABS	0.92	%
Acetal	0.26	%
Neodymium	0.0000159	%

The product does not contain substances cited on the REACH list of hazardous substances.

Steel is produced by combining iron with carbon as well as other elements depending on the desired characteristics. The subcomponents made of steel are formed by stamping.

Stainless steel is produced by combining iron with chromium as well as other elements depending on the desired characteristics. The subcomponents made of steel are formed by stamping.

Zamak is an alloy of four separate metals: zinc, aluminium, magnesium and copper. Subcomponents of the device which are made from zamak are diecast.

ABS is a thermoplastic polymer produced from propylene and ammonia. Subcomponents made of ABS are made by injection moulding.

Acetal, or polyoxymethylene, is produced via polymerisation of anhydrous formaldehyde. Subcomponents made of acetal are also formed by injection moulding.

Acrylic, used in resin form, is a thermoplastic derived from acrylic acid. Subcomponents made of acrylic are made by injection moulding.

Motor, PCB, electronic elements, including copper wiring, etched copper sheets on non-conductive substrates, resistors, transistors etc.

Neodymium alloy is a mix of pure neodymium, iron and boron used in high quality permanent magnets.

Battery (in case of battery-powered Electromechanical devices) : AA 1.5V Lithium

2.7 Manufacture

The production of an electromechanical hardware regularly follows a 3 step procedure:

1. Prefabrication of the semi-finished products (usually by stamp punching or laser cutting) This step might include a surface treatment on factory site or by external manufacturers.
2. Preassembly of assembly modules (onsite factory)
3. Final assembly (onsite factory)

2.8 Environment and health during manufacturing

Regular measurements of air quality and noise levels are performed by ARGE members manufacturers. The results are within the compulsory safety levels. In areas where employees are exposed to chemical products, prescribed safety clothes and technical safety devices are provided. Regular health checks are mandatory for employees of production sites.

2.9 Product processing/Installation

The installation of the product could vary depending on the type of door and the specific situation but products do not require energy consumption for installation.

2.10 Packaging

The product assessed for this EPD is packaged in paper. The product is then packed by batch in

a cardboard box and stacked on wooden pallets for transport to the customer.

Wastes of product packaging are collected separately for waste valorisation including recycling.

2.11 Condition of use

Once installed, the products require no servicing during their expected service lives. There is no consumption of water linked to their use, and they do not cause any emissions.

2.12 Environment and health during use

No environmental damage or health risks are expected within the normal conditions of use of the product.

2.13 Reference service life

The Reference Service Life for this product is 7 years.

This RSL is based on endurance tests as specified in EN14846 standard. The product is guaranteed to maintain its performance for at least 10 000 cycles of use.

2.14 Extraordinary effects

Fire

Specific needs on fire resistance are addressed by single manufacturers, no classes are defined as no EN or national standards are available.

Water

The declared product is designated to be used in regular conditions of a building indoor or outdoor use. An electromechanical hardware is composed mainly of metal or plastic components and electromechanical components and does not eluate hazardous ingredients in case of an unforeseen flooding. In such a situation, the product needs to be replaced.

Mechanical destruction

In case of mechanical destruction of the declared product, it does not perform any impact on the environment or alter its substantial composition.

2.15 Re-use phase

Used components of the product are materials of high quality. After the use stage, they can be recycled. In case of the disassembly of the product, no impacts on the environment are to be concerned. As a rule, the re-use of the product would not be an economical issue.

2.16 Disposal

In case of the disassembly of a door or window, the device might be removed and disposed separately. Since this is a simple procedure the product might get recycled completely. The waste code in accordance with the /European Waste Code/ is 17 04 07.

2.17 Further information

Electromechanical hardware are manufactured in several different designs and construction types in general. Variations are subject to different types, sizes and requirements of the door/window. In general, the same product types might be suitable for wooden, steel or plastic based doors.

Details to be shown on the manufacturers' websites listed on <http://arge.org/members/members-directory.htm>.

3. LCA: Calculation rules

3.1 Declared Unit

The declared unit for electromechanical hardware covered in this Association EPD is 1 kg. As single electromechanical hardware units of the same production type can be custom made for an application situation and the weight of those variations of the same product type may be considerable, it is more appropriate to declare the weight of the product and the weight of the representative product either than one item.

Declared unit

Name	Value	Unit
Declared unit mass	1	kg
Mass of declared product	0.63	kg

3.2 System boundary

The type of the EPD is “cradle to grave”.

The analysis of the product life cycle includes the production and transport of the raw materials, manufacture of the product and the packaging materials, which are declared in modules A1-A3. Losses during production are considered as waste and are sent to recycling. No recycling processes are taken into account except transport and an electricity consumption for grinding the metals. When recycled metals are used as raw material, only their transformation process is taken into account and not the extraction of the raw material.

A4 module represents the transport of the finished product to the installation site.

There is no waste associated with the installation of the product. The A5 module therefore represents only the disposal of the product packaging.

B6 module represent the energy consumption of the product during use phase.

For the RSL considered, results of B4 stage consider the use of batteries (battery-powered configuration).

The End-of-Life (EoL) stages are also considered. The transportation to the EoL disposal site is taken into account in module C2. Module C4 covers the disposal of the device. Module C3 covers the recycling of the individual elements according to European averages, with the remaining waste divided between incineration and landfill. The same assumption as for waste to recycling in A3 is used here.

For end of life modules (C1 to C4) the system boundaries from the XP P01-064/CN standard have been followed, for more information appendices H.2 and H.6 of this standard describe the rules that have been chosen.

In practice, the end-of-life has been modeled as follows:

- When material is sent to recycling, generic transport and electric consumption of a shredder is taken into account (corresponding to the process “Grinding, metals”). Only then, the material is considered to have attained the “end-of-waste” state.

- Each type of waste is modeled as a transport to the treatment site with a distance of 30 km (source: /FD P01-015/). Parts sent to recycling include an electricity consumption (grinding) and a flow (“Materials for recycling, unspecified”).

Four scenarios for the end-of-life of the products have been declared for this EPD:

- one with 100% of the product going to landfill

- one with 100% of the product going to incineration
- one with 100% of the product going to recycling
- one mixed scenario consisting of the previous three scenarios, values depending of the amount of waste going to recycling.

Module D has not been declared.

3.3 Estimates and assumptions

The LCA data of the declared product had been calculated by the production data of 1 member company of the ARGE associations. This company has been chosen by ARGE as being representative by means of its production processes and its market share. The product is chosen to be as representative as possible. In addition, data were used from another manufacturer to consider battery-powered devices in order to complete the LCA results.

3.4 Cut-off criteria

The cut -off criteria considered are 1% of renewable and non-renewable primary energy usage and 1% of the total mass of that unit process. The total neglected input flows per module shall be at a maximum of 5% of energy usage and mass.

For this study, all input and output flows have been considered at 100%, including raw materials as per the product composition provided by the manufacturer and packaging of raw materials as well as the final product. Energy and water consumption have also been considered at 100% according to the data provided. With the approach chosen, no significant environmental impacts are known to have been cut-off.

3.5 Background data

For life cycle modeling of the considered product, all relevant background datasets are taken from the ecoinvent 3.1 – Alloc Rec database. The life cycle analysis software used is SimaPro (V8.1), developed by PRé Consulting.

3.6 Data quality

The time factor, the life cycle inventory data used comes from:

Data collected specifically for this study on the ARGE manufacturer’s site. Data sets are based on 1-year averaged data (time period: 2013 for grid-connected product / 2015 for battery-powered product).

In the absence of collected data, generic data from the ecoinvent V3 database. This is updated regularly and is representative of current processes (the entire database having been updated in 2014).

3.7 Period under review

The data of the LCA is based on the annual production data of a member company of ARGE Associations from 2013.

Other values, e.g. for the processing of the base materials, are taken from the/ ecoinvent v3/1 Alloc Rec where the dataset age varies for each dataset, see ecoinvent documentation for more information.

3.8 Allocation

The products covered by this EPD are produced in numerous sites. The product assessed for the calculation of this EPD is produced by one manufacturer on its own site. All data were provided by this manufacturer of the product per unit, and then

divided by the mass of the product to give a value per kg of product produced
 In addition, a battery-powered device was considered to complete the evaluation. The data were provided by another manufacturer.
 The assumptions relating to the EoL of the product are described in the section System Boundaries.

3.9 Comparability

Basically, a comparison or an evaluation of EPD data is only possible if all the data sets to be compared were created according to /EN 15804/ and the building context, respectively the product-specific characteristics of performance, are taken into account.

4. LCA: Scenarios and additional technical information

The following technical information is a basis for the declared modules or can be used for developing specific scenarios in the context of a building assessment if modules are not declared (MND).

Transport to the building site (A4)

Name	Value	Unit
Litres of fuel	0.0045	l/100km
Transport distance	3500	km
Capacity utilisation (including empty runs)	36	%

Installation into the building (A5)

Name	Value	Unit
Material loss	0.00949	kg

Replacement (B4) / Refurbishment (B5)

When electromechanical hardware devices are battery-powered, the batteries are assumed to be replaced every 2 years which leads to 3 replacements of a set of 2 batteries over a RSL of 7 years.

The transport of the battery is assumed to be done by truck (3.5 tons) with a distance of 30 km.

Name	Value	Unit
Litres of fuel	9	l/100km
Replacement of worn parts	0.089	kg

Reference service life

Name	Value	Unit
Reference service life (condition of use: see §2.13)	7	a

Operational energy use (B6) and Operational water use (B7)

The following scenario has been taken into account:
 - 3 operative modes of the product: Active mode, Stand-by and off

- Time share in each mode (in %)

- Average power for each mode (in Watts)

The total energy consumption during the RSL has been calculated with the following formulas:

Energy consumption_{mode} (Wh) = Average power_{mode} (W) * Time_{mode} (%) * RSL * 365 * 24

Energy consumption of the product (Wh) = Energy consumption_{active} + Energy consumption_{standby} + Energy consumption_{off}

It is assumed that, throughout its RSL (7 years), the product is active 1% of the time and is in standby or

sleep mode during 99% of the time (data from companies).

The average power during the active time is 28.8 W (17 660.16 Wh) and during standby is 3.6 W (218 544.48 Wh). A European electricity mix has been taken into account for the energy consumption.

Name	Value	Unit
Electricity consumption	236.2	kWh

End of life (C1-C4)

Name	Value	Unit
Collected separately (Mixed scenario)	1	kg
Recycling (Mixed scenario)	0.241	kg
Energy recovery (Mixed scenario)	0.349	kg
Landfilling (Mixed scenario)	0.41	kg
Incineration (100% incineration scenario) Scenario 1	1	kg
Landfilling (Landfill scenario) Scenario 2	1	kg
Recycling (100% recycling scenario) Scenario 3	1	kg

An assumption of a 16-32 tons truck transport of the product over 30 km between the dismantling site and the next treatment site is made (source: FD P01-015).

Reuse, recovery and/or recycling potentials (D), relevant scenario information

As Module D has not been declared, materials destined for recycling have been accounted for in the indicator "Materials for recycling" however no benefit has been allocated.

Name	Value	Unit
------	-------	------

5. LCA: Results

DESCRIPTION OF THE SYSTEM BOUNDARY (X = INCLUDED IN LCA; MND = MODULE NOT DECLARED)

PRODUCT STAGE			CONSTRUCTION PROCESS STAGE		USE STAGE								END OF LIFE STAGE				BENEFITS AND LOADS BEYOND THE SYSTEM BOUNDARIES
Raw material supply	Transport	Manufacturing	Transport from the gate to the site	Assembly	Use	Maintenance	Repair	Replacement	Refurbishment	Operational energy use	Operational water use	De-construction demolition	Transport	Waste processing	Disposal	Reuse-Recovery-Recycling-potential	
A1	A2	A3	A4	A5	B1	B2	B3	B4	B5	B6	B7	C1	C2	C3	C4	D	
X	X	X	X	X	MND	MND	MND	X	MND	X	MND	X	X	X	X	MND	

RESULTS OF THE LCA - ENVIRONMENTAL IMPACT: 1 kg of Electromechanical hardware

Parameter	Unit	A1-A3	A4	A5	B4	B6	C1	C2	C2/1	C2/2	C2/3	C3	C3/1	C3/2	C3/3	C4	C4/1	C4/2	C4/3
GWP	[kg CO ₂ -Eq.]	1.02E+1	5.89E+1	1.36E+2	5.32E+1	1.17E+2	0.00E+0	5.05E+3	5.05E+3	5.05E+3	5.05E+3	5.90E+3	0.00E+0	0.00E+0	8.66E+3	6.17E+2	5.23E+1	4.97E+1	0.00E+0
ODP	[kg CFC11-Eq.]	8.22E-7	1.08E-7	3.60E-10	4.62E-8	1.26E-5	0.00E+0	9.26E+10	9.26E+10	9.26E+10	9.26E+10	6.33E+10	0.00E+0	0.00E+0	9.30E+10	1.89E+9	4.02E+9	3.43E+9	0.00E+0
AP	[kg SO ₂ -Eq.]	6.37E-2	2.39E-3	1.41E-5	8.39E-3	4.87E-1	0.00E+0	2.05E+5	2.05E+5	2.05E+5	2.05E+5	2.45E+5	0.00E+0	0.00E+0	3.60E+5	1.68E+4	2.58E+4	1.24E+4	0.00E+0
EP	[kg (PO ₄) ³ -Eq.]	2.23E-2	4.06E-4	6.29E-6	1.82E-3	5.47E-2	0.00E+0	3.48E+6	3.48E+6	3.48E+6	3.48E+6	2.75E+6	0.00E+0	0.00E+0	4.04E+6	4.37E+5	7.52E+5	5.94E+4	0.00E+0
POCP	[kg ethene-Eq.]	5.93E-3	2.68E-4	3.22E-6	5.45E-4	2.69E-2	0.00E+0	2.30E+6	2.30E+6	2.30E+6	2.30E+6	1.35E+6	0.00E+0	0.00E+0	1.98E+6	1.57E+5	1.60E+5	1.41E+4	0.00E+0
ADPE	[kg Sb-Eq.]	4.31E-3	1.89E-6	0.00E+0	3.82E-5	0.00E+0	0.00E+0	1.62E+8	1.67E+8	1.67E+8	1.67E+8	2.20E+9	0.00E+0	0.00E+0	3.53E+9	2.15E+7	4.69E+7	2.47E+8	0.00E+0
ADPF	[MJ]	1.46E+2	8.97E+0	3.31E+2	8.27E+0	1.80E+3	0.00E+0	7.69E+2	7.69E+2	7.69E+2	7.69E+2	9.05E+2	0.00E+0	0.00E+0	1.33E+1	2.84E+1	3.73E+1	2.80E+1	0.00E+0

Caption: GWP = Global warming potential; ODP = Depletion potential of the stratospheric ozone layer; AP = Acidification potential of land and water; EP = Eutrophication potential; POCP = Formation potential of tropospheric ozone photochemical oxidants; ADPE = Abiotic depletion potential for non-fossil resources; ADPF = Abiotic depletion potential for fossil resources

RESULTS OF THE LCA - RESOURCE USE: 1 kg of Electromechanical hardware

Parameter	Unit	A1-A3	A4	A5	B4	B6	C1	C2	C2/1	C2/2	C2/3	C3	C3/1	C3/2	C3/3	C4	C4/1	C4/2	C4/3
PERE	[MJ]	1.61E+1	1.12E+1	2.06E+3	8.41E+1	2.33E+2	0.00E+0	9.61E+4	9.61E+4	9.61E+4	9.61E+4	1.17E+2	0.00E+0	0.00E+0	1.72E+2	9.80E+2	1.14E+2	2.11E+2	0.00E+0
PERM	[MJ]	2.21E+0	0.00E+0	1.40E+0	0.00E+0	0.00E+0	0.00E+0	0.00E+0	0.00E+0	0.00E+0	0.00E+0	0.00E+0	0.00E+0	0.00E+0	0.00E+0	0.00E+0	0.00E+0	0.00E+0	0.00E+0
PERT	[MJ]	1.84E+1	1.12E+1	1.40E+0	8.41E+1	2.33E+2	0.00E+0	9.61E+4	9.61E+4	9.61E+4	9.61E+4	1.17E+2	0.00E+0	0.00E+0	1.72E+2	9.08E+2	1.14E+2	2.11E+2	0.00E+0
PENRE	[MJ]	1.71E+2	9.13E+0	3.95E+2	8.95E+0	2.64E+3	0.00E+0	7.82E+2	7.82E+2	7.82E+2	7.82E+2	1.33E+1	0.00E+0	0.00E+0	1.95E+1	3.23E+1	3.86E+1	3.53E+1	0.00E+0
PENRM	[MJ]	6.34E-1	0.00E+0	4.98E-2	0.00E+0	0.00E+0	0.00E+0	0.00E+0	0.00E+0	0.00E+0	0.00E+0	0.00E+0	0.00E+0	0.00E+0	0.00E+0	0.00E+0	0.00E+0	0.00E+0	0.00E+0
PENRT	[MJ]	1.72E+2	9.13E+0	1.03E-2	8.95E+0	2.64E+3	0.00E+0	7.82E+2	7.82E+2	7.82E+2	7.82E+2	1.33E+1	0.00E+0	0.00E+0	1.95E+1	3.23E+1	3.86E+1	3.53E+1	0.00E+0
SM	[kg]	5.31E-1	0.00E+0	0.00E+0	0.00E+0	0.00E+0	0.00E+0	0.00E+0	0.00E+0	0.00E+0	0.00E+0	0.00E+0	0.00E+0	0.00E+0	0.00E+0	0.00E+0	0.00E+0	0.00E+0	0.00E+0
RSF	[MJ]	0.00E+0	0.00E+0	0.00E+0	0.00E+0	0.00E+0	0.00E+0	0.00E+0	0.00E+0	0.00E+0	0.00E+0	0.00E+0	0.00E+0	0.00E+0	0.00E+0	0.00E+0	0.00E+0	0.00E+0	0.00E+0
NRSF	[MJ]	0.00E+0	0.00E+0	0.00E+0	0.00E+0	0.00E+0	0.00E+0	0.00E+0	0.00E+0	0.00E+0	0.00E+0	0.00E+0	0.00E+0	0.00E+0	0.00E+0	0.00E+0	0.00E+0	0.00E+0	0.00E+0
FW	[m³]	9.36E-2	1.72E-3	2.77E-5	1.92E-2	8.86E-1	0.00E+0	1.48E+5	1.48E+5	1.48E+5	1.48E+5	4.45E+5	0.00E+0	0.00E+0	6.54E+5	4.12E+4	1.17E+3	3.42E+4	0.00E+0

Caption: PERE = Use of renewable primary energy excluding renewable primary energy resources used as raw materials; PERM = Use of renewable primary energy resources used as raw materials; PERT = Total use of renewable primary energy resources; PENRE = Use of non-renewable primary energy excluding non-renewable primary energy resources used as raw materials; PENRM = Use of non-renewable primary energy resources used as raw materials; PENRT = Total use of non-renewable primary energy resources; SM = Use of secondary material; RSF = Use of renewable secondary fuels; NRSF = Use of non-renewable secondary fuels; FW = Use of net fresh water

RESULTS OF THE LCA – OUTPUT FLOWS AND WASTE CATEGORIES: 1 kg of Electromechanical hardware

Parameter	Unit	A1-A3	A4	A5	B4	B6	C1	C2	C2/1	C2/2	C2/3	C3	C3/1	C3/2	C3/3	C4	C4/1	C4/2	C4/3
HWD	[kg]	1.83E+0	5.64E-3	3.13E-4	7.33E-2	8.32E+0	0.00E+0	4.83E-5	4.83E-5	4.83E-5	4.83E-5	4.18E-4	0.00E+0	0.00E+0	6.14E-4	1.11E-2	2.66E-1	1.24E-3	0.00E+0
NHWD	[kg]	1.13E+1	4.68E-1	2.54E-2	9.13E-1	3.75E+0	0.00E+0	4.01E-3	4.01E-3	4.01E-3	4.01E-3	1.88E-3	0.00E+0	0.00E+0	2.77E-3	7.22E-2	1.45E-2	1.00E+0	0.00E+0
RWD	[kg]	5.67E-4	6.13E-5	2.23E-7	2.19E-5	1.43E-2	0.00E+0	5.25E-7	5.25E-7	5.25E-7	5.25E-7	7.17E-7	0.00E+0	0.00E+0	1.05E-6	1.21E-6	1.35E-6	2.65E-6	0.00E+0
CRU	[kg]	0.00E+0	0.00E+0	0.00E+0	0.00E+0	0.00E+0	0.00E+0	0.00E+0	0.00E+0	0.00E+0	0.00E+0	0.00E+0	0.00E+0	0.00E+0	0.00E+0	0.00E+0	0.00E+0	0.00E+0	0.00E+0
MFR	[kg]	1.93E-1	0.00E+0	9.94E-2	0.00E+0	0.00E+0	0.00E+0	0.00E+0	0.00E+0	0.00E+0	0.00E+0	6.80E-1	0.00E+0	0.00E+0	1.00E+0	0.00E+0	0.00E+0	0.00E+0	0.00E+0
MER	[kg]	0.00E+0	0.00E+0	0.00E+0	0.00E+0	0.00E+0	0.00E+0	0.00E+0	0.00E+0	0.00E+0	0.00E+0	0.00E+0	0.00E+0	0.00E+0	0.00E+0	0.00E+0	0.00E+0	0.00E+0	0.00E+0
EEE	[MJ]	0.00E+0	0.00E+0	3.28E-2	0.00E+0	0.00E+0	0.00E+0	0.00E+0	0.00E+0	0.00E+0	0.00E+0	0.00E+0	0.00E+0	0.00E+0	0.00E+0	5.36E-2	1.39E-2	0.00E+0	0.00E+0
EET	[MJ]	0.00E+0	0.00E+0	6.82E-2	0.00E+0	0.00E+0	0.00E+0	0.00E+0	0.00E+0	0.00E+0	0.00E+0	0.00E+0	0.00E+0	0.00E+0	0.00E+0	1.10E-1	2.85E-2	0.00E+0	0.00E+0

HWD = Hazardous waste disposed; NHWD = Non-hazardous waste disposed; RWD = Radioactive waste disposed; CRU = Components for re-use; MFR = Materials for recycling; MER = Materials for energy recovery; EEE = Exported electrical energy; EEE = Exported thermal energy

Other end of life scenarios have been calculated in order to build specific end of life scenario at the building level:

- scenario 1: the product is considered to be 100% incinerated
- scenario 2: the product is considered to be 100% landfilled
- scenario 3: the product is considered to be 100% recycled

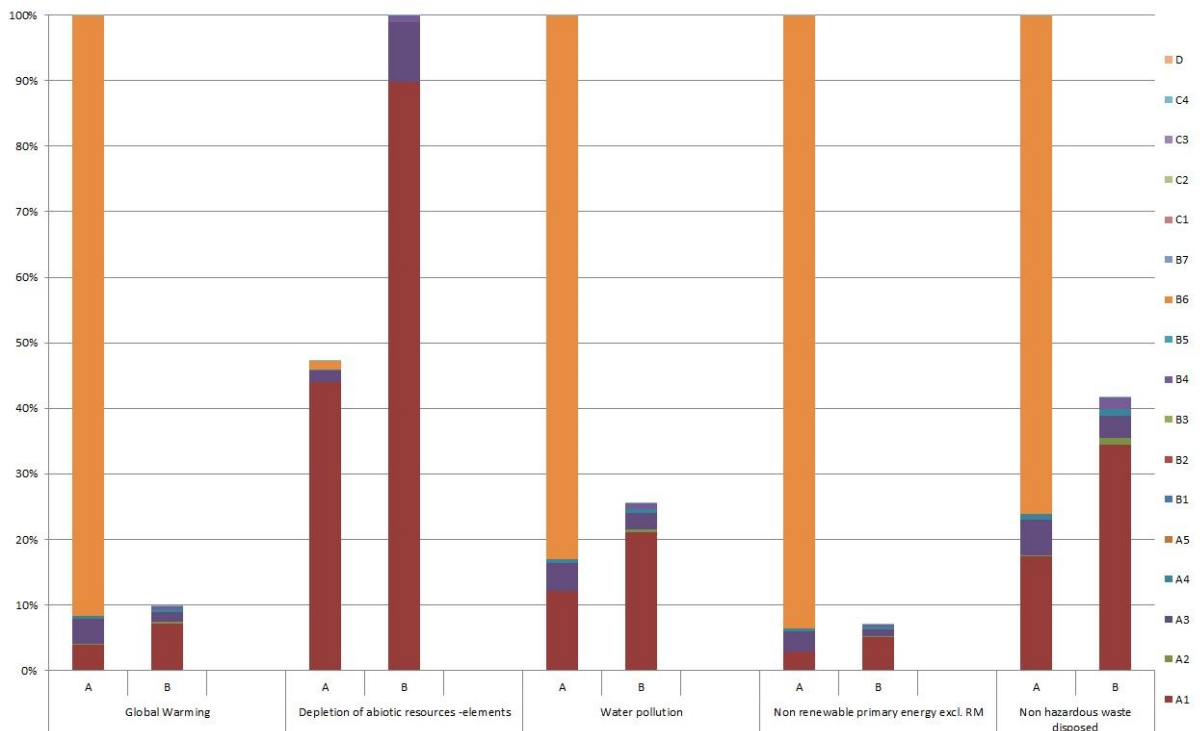
6. LCA: Interpretation

The results concerning grid-connected configuration products are the most impactful (due to the electricity consumption during use), except for the indicator ADP, comparing to battery-powered configuration products. The difference between the impacts of the two configurations on this indicator is significant and comes from the quantity of PCB used.

Thus, to consider the worst case, the results given declares results of the grid-connected product on all

indicators except ADP and results of the battery-powered product on ADP.

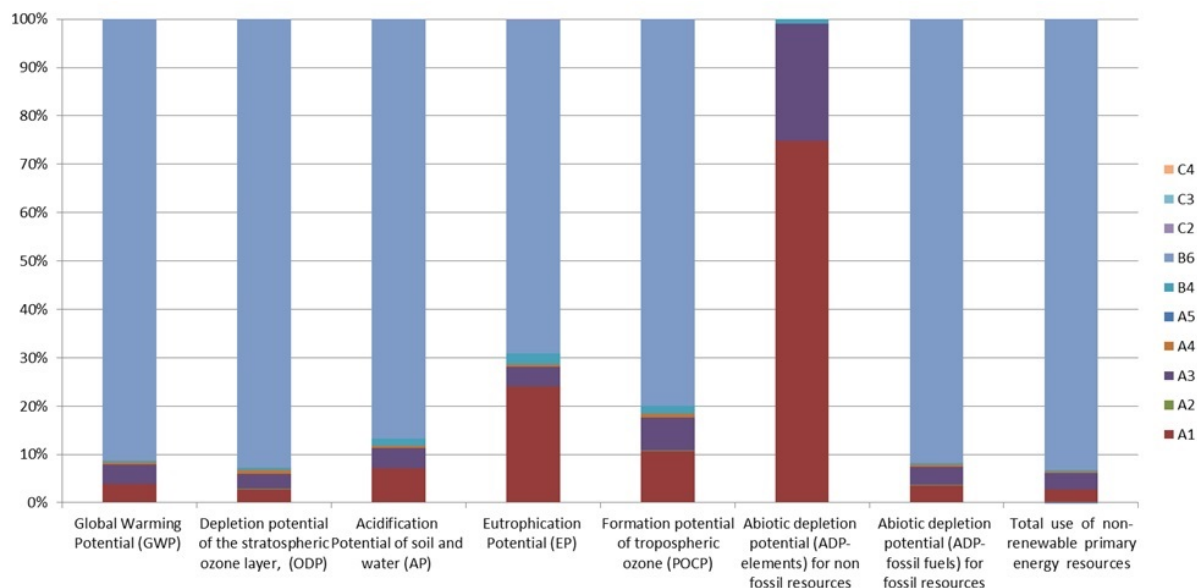
Moreover, the battery-powered product is the only one to have impacts on the B4 step; its results are added to the final impacts of the configuration. The end of life of batteries is also more impacting than the other material; therefore the C4 step of the battery-powered product is declared for the EPD.



The majority of the impacts for this group of products are due to the consumption of energy during the use phase, except for the depletion of abiotic non-fossil resources ; the impact for which stems mostly from A1

– Extraction and supply of raw materials (PCB and metals).

The results are conservative as complying with the scenario described just above.



7. Requisite evidence

No testing results are required by the PCR part B.

8. References

ISO 14040

ISO 14040:2006-10, Environmental management – Life cycle assessment – Principles and framework (ISO 14040:2006). German and English version EN ISO 14040:2006

DIN EN ISO 14044

DIN EN ISO 14044:2006-10, Environmental management — Life Cycle Assessment Requirements and Instructions (ISO 14044:2006); German and English version EN ISO 14044:2006

FD P01-015

FD P01-015:2006, Environmental quality of construction products - Energy and transport data sheet

CEN/TR 15941

CEN/TR 15941:2010-03, Sustainability of construction works — Environmental Product Declarations — Methodology for selection and use of generic data; German version CEN/TR 15941:2010

European Waste Code

epa - European Waste Catalogue and Hazardous Waste List - 01-2002.

Ecoinvent 3.1

Ecoinvent 3.1 - Allocation Recycling database.

IBU PCR part A

Part A: Calculation Rules for the Life Cycle Assessment and Requirements on the Project report

IBU PCR part B

Part B: Requirements on the EPD for Locks and fittings, Version 2016-04

Institut Bauen und Umwelt

Institut Bauen und Umwelt e.V., Berlin(pub.): Generation of Environmental Product Declarations (EPDs);

General principles

for the EPD range of Institut Bauen und Umwelt e.V. (IBU), 2013/04
www.bau-umwelt.de

ISO 14025

DIN EN ISO 14025:2011-10: Environmental labels and declarations — Type III environmental declarations — Principles and procedures

EN 15804

EN 15804:2012-04+A1 2013: Sustainability of construction works — Environmental Product Declarations — Core rules for the product category of construction products

**Publisher**

Institut Bauen und Umwelt e.V.
Panoramastr. 1
10178 Berlin
Germany

Tel +49 (0)30 3087748- 0
Fax +49 (0)30 3087748- 29
Mail info@bau-umwelt.com
Web www.bau-umwelt.com

**Programme holder**

Institut Bauen und Umwelt e.V.
Panoramastr 1
10178 Berlin
Germany

Tel +49 (0)30 - 3087748- 0
Fax +49 (0)30 – 3087748 - 29
Mail info@bau-umwelt.com
Web www.bau-umwelt.com

**Author of the Life Cycle Assessment**

CETIM
rue de la Presse 7
42952 Saint-Etienne Cedex 1
France

Tel 0033477794042
Fax 0033477794107
Mail sqr@cetim.fr
Web www.cetim.fr

**Owner of the Declaration**

ARGE; European Federation of
Associations of Lock and Builders
Hardware Manufacturers
Offerstraße 12
42551 Velbert
Germany

Tel +49 (0)2051 9506 36
Fax +49 (0)2051 9506 25
Mail info@arge.org
Web www.arge.org